



Hotspot (T-Mobile T9 Franklin)

Getting Started

A mobile hotspot is a device that provides wifi in areas that do not have wired internet. This quick sheet provides directions on connecting a device to a T-Mobile T9 Franklin mobile hotspot.

Basic Setup

The hotspot box contains instruction manuals, the hotspot, and a power adapter (with power cord). The manuals contain useful information on using the hotspot.

1. The hotspot has a power button on its front edge:



2. To power on the hotspot, hold the power button. To power off the hotspot, hold the power button.
3. Push the power button (press and release) to cycle through information on the hotspot screen.

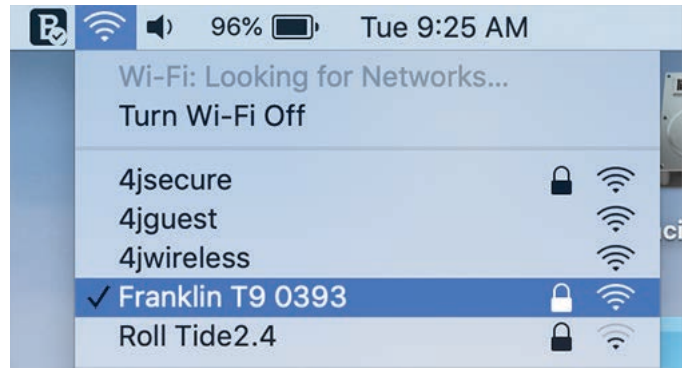
Connect a Laptop / iPad to the Hotspot

1. Power on the hotspot and wait for it be ready.
2. Push the power button until the screen displays "Wi-Fi Name:"

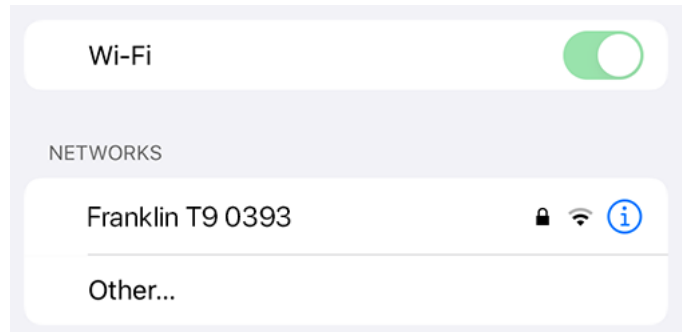


This screen shows the wifi signal to which you will connect your device. In this example, the wifi signal is named "Franklin T9 0393".

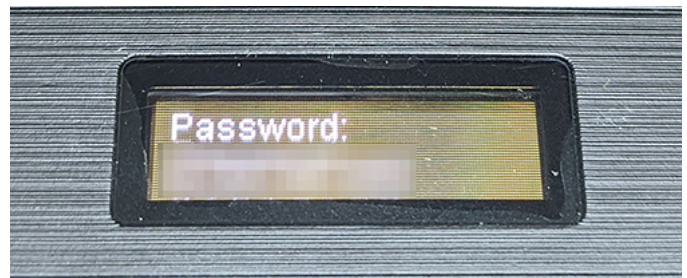
3. Connect your device to the hotspot's wifi signal. Mac laptop example:



iPad example:



4. Your device will prompt you to enter the password for the hotspot's wifi signal. On the hotspot, push the power button until the screen displays "Password:"



This screen displays the password for the hotspot's wifi signal. Enter this password into the prompt on your device.